



Excellent Design & Manufacture

## Ultrasonic Point Level Detectors

---

### **Ultrasonic point level detectors**

are a cost-effective solution for your applications. Installation requires mounting the sensor (threaded or flanged) to the vessel, connecting the power and control wires, and applying power. There is no additional set-up or calibration required. Since it is an electronic instrument with no moving parts, preventive maintenance is limited to an annual visual inspection. The only recommended spare part is the “board” at a quantity of one board for every 10 units. A technician with basic electrical skills (wiring) can service the instrument.

Why use an ultrasonic detector over other level technologies? Depending upon your application, there may be three or four technologies equally suited for your application; however, only one will be the best choice when considering its features and benefits.



### **Features & Benefits**

#### **Cost**

- In addition to the price of the instrument, you must consider the cost of installation, set-up and calibration.

#### **Maintenance**

- You need to factor in the frequency of preventative maintenance. Also, consider the cost of keeping key “spare parts” on the shelf.

#### **Skill**

- What “skill” level is required of your maintenance personnel to service the instrument.

## Model Number System

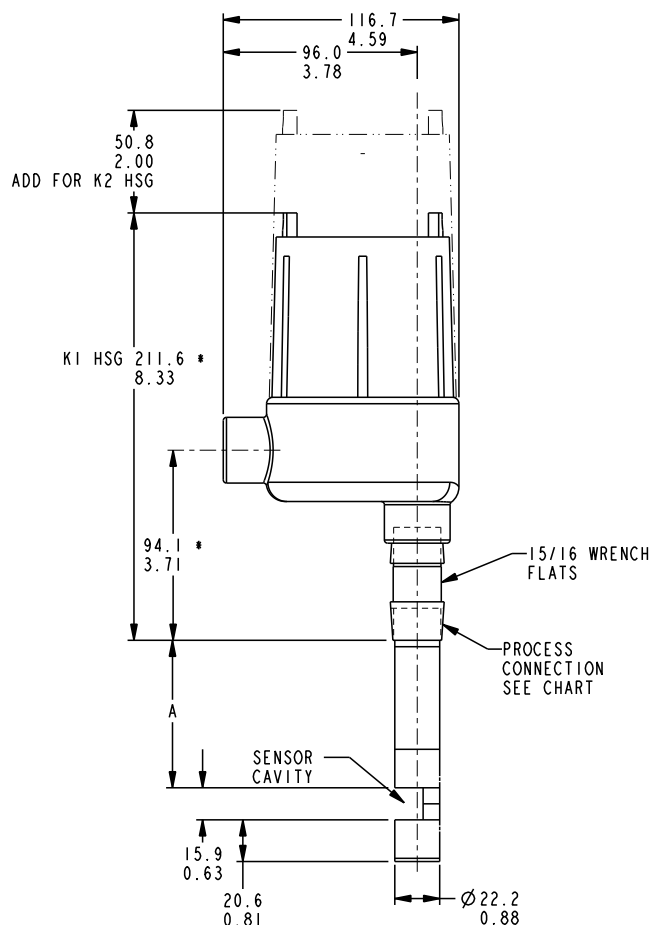
# ENE101-610003-610

ENE101-610003-610 is comprised of two parts. The first is the electronics and housing; the second is the sensor.

## Product Specifications

|                                   |  |                                     |  |
|-----------------------------------|--|-------------------------------------|--|
| Electrical Housing                | Integral   | Enclosure Environmental Rating      | NEMA 4X; IP65  |
| Input Power                       |  | Conduit Connection                  | 3/4" NPT   |
| Line                              | 24 VDC   | Maximum Remote Distance from Sensor | 50 feet (15.2 meters)  |
| Loop                              | 11-36 VDC Intrinsically Safe   | Ambient Temperature Range           | -40 to 160°F<br>(-40 to 71°C)  |
| Fuses                             | Field replaceable (line power only)  | Process Temperature Range           | -40 to 250°F<br>(-40 to 121°C)   |
| Output Type                       |  | Maximum Process Pressure            | 2000 psig (138 bar)  |
| Line                              | 10A DPDT, 250 VAC<br>10A DPDT, 30 VDC<br>DC rating shown for resistive loads | Weight*                             | 2.5 lbs. (1.2 kg)  |
| Loop                              | 8mA (dry),<br>16 mA (Wet)-Standard   | Sensor Type                         | Vertical Gap   |
| Loop Resistance                   | 765 ohms maximum @ 24 VDC  | Insertion Length                    | 2 INCH   |
| Repeatability                     | 0.078" (2mm)   | Sensor Material                     | 316SS (standard)   |
| Failsafe                          | HLFS-Standard; field selectable<br>is optional                               | Process Connection                  | 3/4"NPT  |
| Maximum Current Draw (Line Power) |  | Accessories                         |  |
| 24 VDC                            | 100 mA   |                                     | SS nameplate permanently affixed to housing<br>with customer specified tag information |
| 120 VAC                           | 35 mA  |                                     |  |
| 240 VAC                           | 18 mA  |                                     |  |
| Response Time                     |  |                                     |  |
| On                                | 0 second   |                                     |  |
| Off                               | 1 second   |                                     |  |

Dimensions in this catalog are for reference only. They may be changed without notice. Contact the factory for certified drawings for a particular model number. Dimensions are expressed as millimeter over inches (Linear = mm/in.).



## Sensor Dimensions

Dimensions shown are for reference only. Contact the factory for certified dimension drawings.  
Linear = mm/in.

| Process Connection | *Add to Length |
|--------------------|----------------|
| 3/4" NPT(M)        | Shown          |

### Type U Single Point (Threaded)

